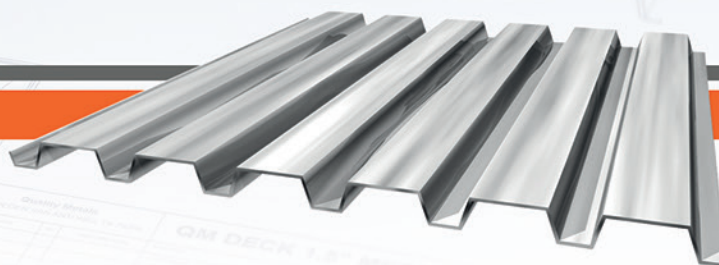
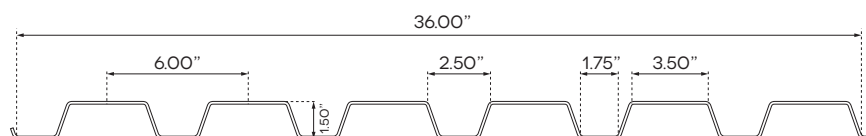


# QM B DECK

## 1.5" B METAL DECK



# 1.5" B METAL DECK



**QM 1.5" B Metal Deck** is strong, light weight, economical, and easy to install and is the most common structural roof deck. Normally **1.5" B Metal Deck** is used in short to medium span conditions ranging from 3 feet to 10 feet in distance. **QM B Deck** is 1 1/2" deep and is available in galvanized and prime painted finishes.

**QM B Deck** is used in a variety of applications such as:  
Roofs, Canopies, Awnings, Trash Enclosure Gates, Roof Screens, etc.

## Features

- Gauges 18, 20, 22.
- Available Galvanized and Galvalume.
- Coverage 36".
- Factory made.

## Product Specifications

- Applications: Roof
- Coverage Widths: 36"
- Rib Height: 1 1/2"
- Espaced Ribs: 6" O.C.
- Attachment: Fasteners.
- Gauges: 18, 20, 22.
- Finishes: Galvanized and Galvalume.



QUALITY METALS © ALL RIGHTS RESERVED 2018



[www.saqualitymetals.com](http://www.saqualitymetals.com)

**San Antonio** • 2707 Castroville Rd • San Antonio, TX 78237 • (210) 227-7276 • Fax (210) 227-0329  
**McAllen** • 2221 Austin Ave • McAllen, TX 78501 • (956) 627-2966 • Fax (956) 627-0918  
**Dallas** • 2515 Willowbrook Rd 100 • Dallas, TX 75220 • (972) 331 6800 • Fax (972) 331 6803  
**Houston** • 6460 Langfield Road • Houston, TX 77092 • (713) 944-4480 • Fax (713) 944-4430

# QM B DECK

## 1.5" B METAL DECK

SECTION PROPERTIES						
GAUGE	Wt	TOP IN COMPRESSION		BOTTOM IN COMPRESSION		Fy
	PSF	In (in4/ft)	Se (in3/ft)	In (in4/ft)	Se (in3/ft)	Ksi
22	1.665	0.157	0.178	0.173	0.190	50
20	2.005	0.200	0.230	0.214	0.238	50
18	2.650	0.290	0.314	0.298	0.332	50

The profile properties of the steel sheet were calculated according to the specs of the American Iron and Steel Institute 2007.  
 The properties of the composite section were calculated according to the specifications of the Steel Deck Institute 2011.  
 The esteem is Grade 50 (Fy=50 ksi).

MAXIMUM CLEAR SPANS						
GAUGE	SUPPORT	TOTAL SLAB DEPTH				
		3.5	4	4.5	5	6
22	SINGLE	6'-5"	5'-10"	5'-6"	5'-3"	4'-10"
	DOUBLE	7'-9"	7'-9"	7'-4"	7'-1"	6'-6"
	TRIPLE	7'-2"	7'-10"	7'-6"	7'-1"	6'-7"
20	SINGLE	7'-5"	6'-9"	6'-4"	6'-1"	5'-7"
	DOUBLE	10'-9"	9'-0"	8'-7"	8'-2"	7'-6"
	TRIPLE	9'-9"	9'-2"	7'-6"	8'-3"	7'-3"
18	SINGLE	8'-8"	7'-2"	6'-9"	6'-5"	5'-11"
	DOUBLE	10'-3"	9'-4"	8'-11"	8'-6"	7'-10"
	TRIPLE	12'-0"	9'-8"	9'-2"	8'-9"	8'-1"

All panels are considering 1 ft of panel width.

ALLOWABLE LOADS (PSF)																
GAUGE	TOTAL SLAB DEPTH	SPAN (ft-in)														
		5	5.6	6	6.6	7	7.6	8	8.6	9	9.6	10	10.6	11	11.6	12
22	3.5	324	290	264	233	207	184	162	139	126	108	100	86	74	68	57
	4	375	352	336	315	278	244	216	190	167	112	133	116	105	92	84
	4.5	398	386	377	368	353	317	283	250	222	198	176	153	138	123	116
	5	400	398	387	378	370	357	328	299	268	240	215	189	170	154	141
	6	400	400	400	399	389	378	365	348	318	285	257	227	204	178	166
20	3.5	352	333	306	262	231	196	181	160	140	125	111	95	83	72	62
	4	389	366	344	326	296	265	235	208	184	164	146	128	116	99	90
	4.5	400	400	312	375	350	320	302	271	245	218	194	168	152	131	124
	5	400	400	389	379	362	345	339	315	285	257	232	204	183	158	146
	6	400	400	400	400	398	386	373	355	335	312	285	252	226	190	177
18	3.5	364	346	330	251	274	240	212	186	165	145	127	108	94	79	49
	4	389	377	358	342	318	291	264	236	213	190	168	146	131	110	73
	4.5	400	400	400	394	372	349	323	302	273	247	224	195	177	145	89
	5	400	400	400	399	387	372	355	338	318	294	268	240	216	180	102
	6	400	400	400	400	400	399	385	366	345	326	309	292	264	210	115

Maximum clear spans were calculated according to the Steel Deck Institute recommendations and limited to deflection of  $L/180 < 3/4"$ .