

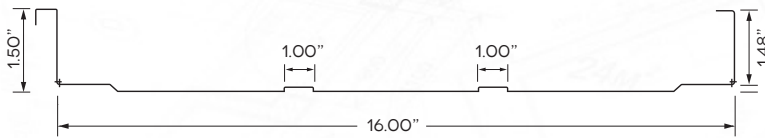


1.5" Mechanically field seamed, high strength Standing Seam Roof System.

ML-150

1.5 MECHANICAL LOCK

WEATHER TIGHTNESS
WARRANTY PROGRAM
AVAILABLE FOR THIS PRODUCT



The **ML-150 Mechanical Lock (1.5" High Standing Seam)** features structural performance and architectural aesthetics. The **ML-150** can be manufactured on job sites for various substrates and uses concealed fasteners with a fixed and/or floating clip system. The floating clip system reduces the effects of thermal stresses on the **ML-150** panel system, maintaining a unique smooth, uniform appearance, despite fluctuations in temperature.

ML-150 Mechanical Lock Panel is a mechanically seamed, vertical leg standing seam roof system that combines a 1.5" tall slim rib with exceptional uplift resistance and is available in a 16-inch width and allows for the installation directly over purlin and bar joists.

ML-150 Panels are designed to withstand the most rigorous weather conditions.

FEATURES

- 24 GA steel.
- Colors available on standard, premium and metallic.
- Curved available.
- On site or factory made.
- Available in smooth, striated and stiffener ribs.
- **UL Construction Number: TGKX5549.**
- Uplift resistance of prepared roof-covering materials **UL 580 Class90.**
- Impact resistance of prepared roof-covering materials **UL2218 Class 4.**
- Fire tests of roof coverings **UL 790. Class A, B, C.** External fire exposure.
- **TDI Approved.**

PRODUCT SPECIFICATIONS

- **Applications:** Roof and Wall
- **Coverage Widths:** 16"
- **Minimum Slope:** 1/2:12
- **Panel Attachment:** Standing Seam System, clip fixed and floating.
- **Gauges:** 24 (standard), 22 and 26 (optional)
- **Coatings:** Galvalume®, Storm Armor (Durapon 70®, Ceraname!®).
- **Substructure:** Plywood or OSB to be a nominal 5/8 inch thick, Open Framing and Metal Decking.

SMOOTH

STIFFENER RIBS

STRIATIONS

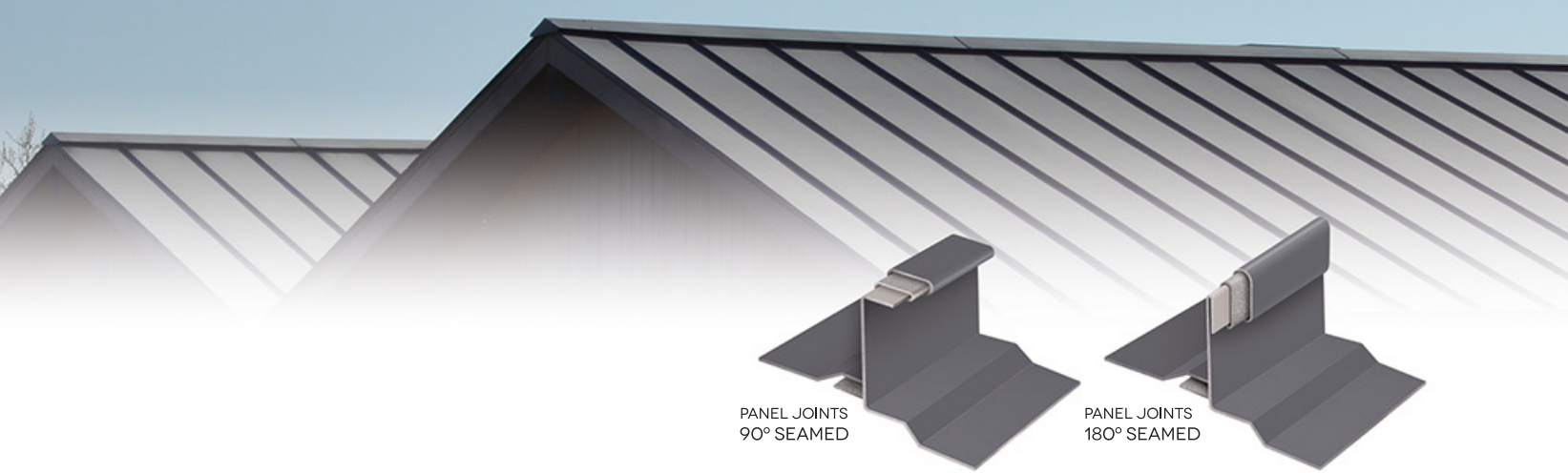
CURVED

QUALITY METALS © ALL RIGHTS RESERVED 2018

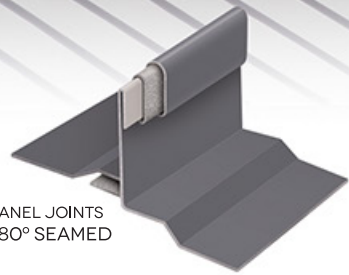


STANDING SEAM
ROOF SYSTEMS

SAN ANTONIO 2707 Castroville Rd • San Antonio, TX 78237 • (210) 227-7276 • Fax (210) 227-0329
MCALLEN 2221 Austin Ave • McAllen, TX 78501 • (956) 627-2966 • Fax (956) 627-0918
DALLAS 11569 Goodnight Lane • Dallas, TX 75229 • (972) 331 6800 • Fax (972) 331 6803
HOUSTON 6460 Langfield Road • Houston, TX 77092 • (713) 944-4480 • Fax (713) 944-4430



PANEL JOINTS
90° SEAMED



PANEL JOINTS
180° SEAMED

ML-150

1.5 MECHANICAL LOCK



CATEGORY	CHARACTERISTIC	TEST METHOD	PURPOSE	RESULT
ENVIRONMENTAL	Impact Resistance	UL 2218	Determines Impact Resistance of prepared Roof Covering Materials	CLASS 4 RAITING
FIRE RESISTANCE	Room Fire Performance	UL 790	Standard for Standard Test Methods for Fire Tests of Roof Coverings	CLASS A FIRE RATING
	Room Fire Performance	UL 263	Standard for Standard Test Methods for Fire Tests of Roof Coverings	For use in Design Nos. TGKX575, TGKX602



Descriptions and specifications contained herein were in effect at the time this publication was approved for printing. In a continuing effort to refine and improve products, Quality Metals reserves the right to discontinue products at any time or change specifications and/or designs without incurring obligation. To ensure you have the latest information available, please inquire or visit our website at www.saqualitymetals.com. Application details are for illustration purposes only and may not be appropriate for all environmental conditions, building designs or panel profiles. Projects should be designed to conform to applicable building codes, regulations and accepted industry practices. If there is a conflict between this manual and project erection drawings, the erection drawings will take precedence.

QUALITY METALS © ALL RIGHTS RESERVED 2018



STANDING SEAM
ROOF SYSTEMS

SAN ANTONIO 2707 Castrovilla Rd • San Antonio, TX 78237 • (210) 227-7276 • Fax (210) 227-0329
MCALLEN 2221 Austin Ave • McAllen, TX 78501 • (956) 627-2966 • Fax (956) 627-0918
DALLAS 11569 Goodnight Lane • Dallas, TX 75229 • (972) 331 6800 • Fax (972) 331 6803
HOUSTON 6460 Langfield Road • Houston, TX 77092 • (713) 944-4480 • Fax (713) 944-4430